

CAMPLEX®

presents:

**DIRTY
FIBER**

www.camplex.com

Microscopic particles could be the difference between mission success & **failure** - clean fiber means performance!

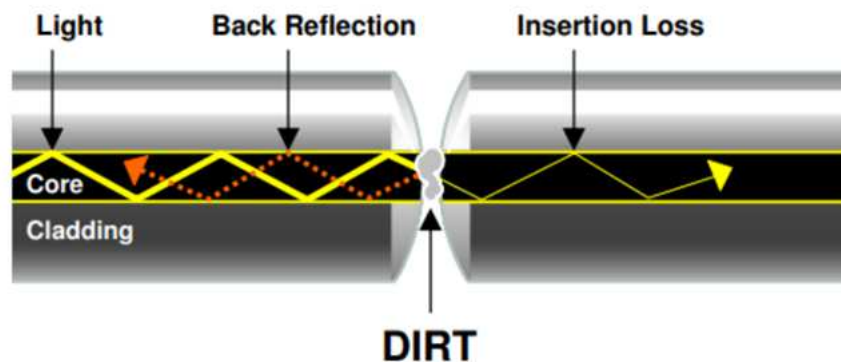
A chain is only as strong as its weakest link! Your audio, video, and data rely on fiber networks to stay connected to your infrastructure and the outside world as well as meet consumer expectations for access to information at any time and place. Downtime and low network performance simply are no longer an option and may be the highest expense in any fiber network.

Contamination is the #1 source of troubleshooting in optical networks.

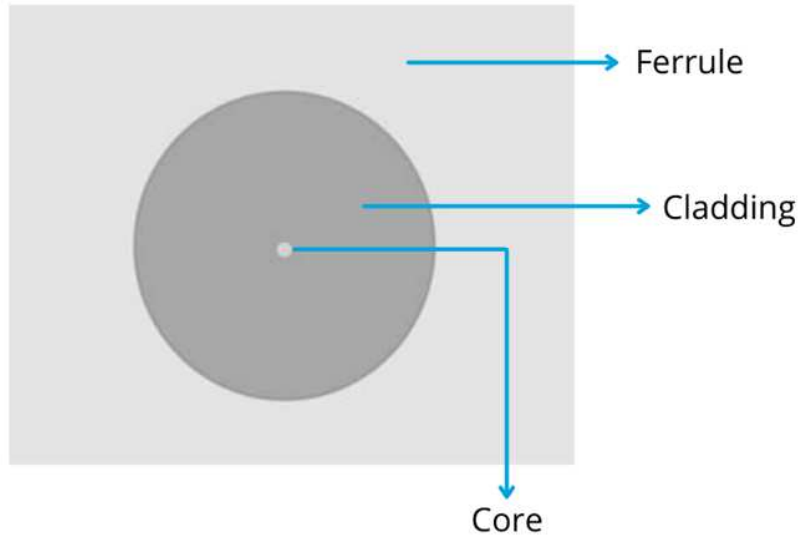
Dirt is **everywhere!** It's airborne, on clothing, hands, dust caps, test equipment etc..

A 1-micrometer dust particle on a single-mode core can block up to 1% of the light (a 0.05dB loss)! By comparison, a typical human hair is 50 to 75 micrometers in diameter, as much as eight times larger!

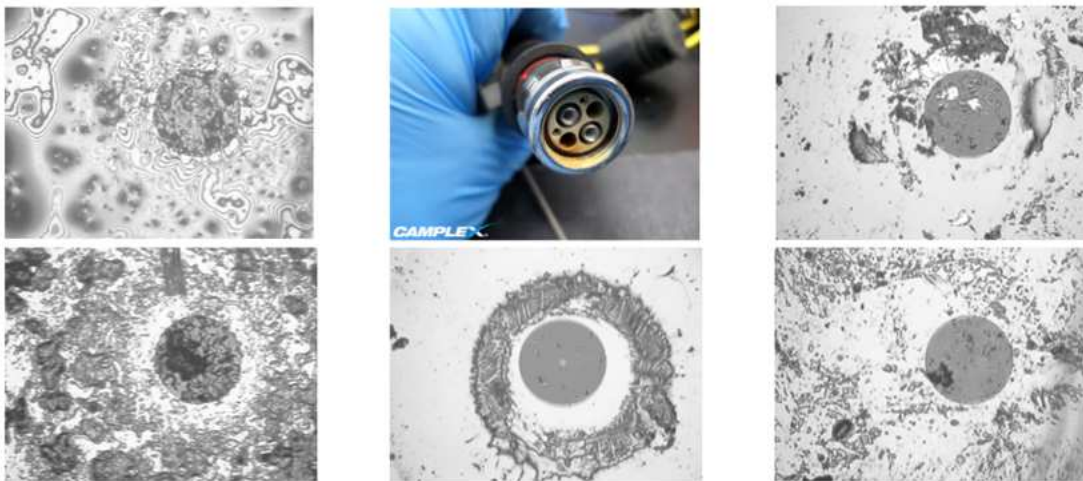
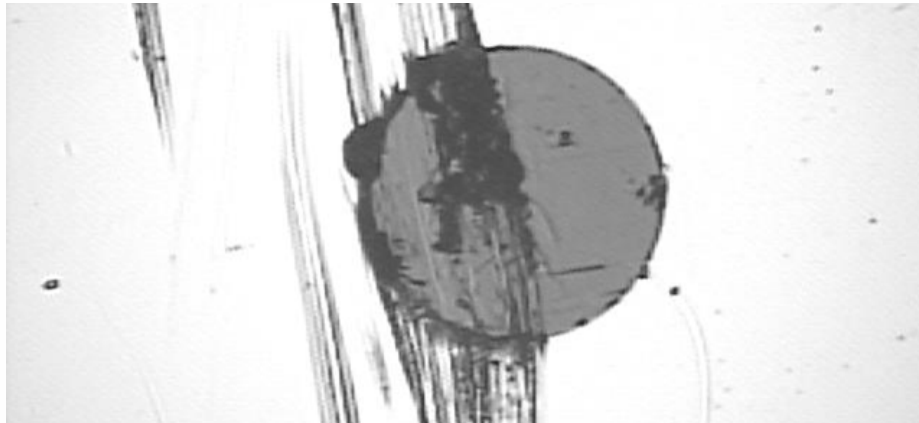
This single particle can mate into the core of a fiber and cause significant back reflection, insertion loss and even equipment damage.



Most connectors are not inspected until the problem is detected which is **AFTER** permanent damage has already occurred.



A clean fiber (above) VS a dirty fiber (below)



Even a brand new connector can be dirty! Dust caps are meant to protect the fiber end-face, but can also be a source of contamination.

Regular Inspection & Cleaning reduces network downtime and offers optimized signal performance and prevention of network damage!

**Check Out the Complex Site to Learn More
About The Importance of Clean Fiber!**